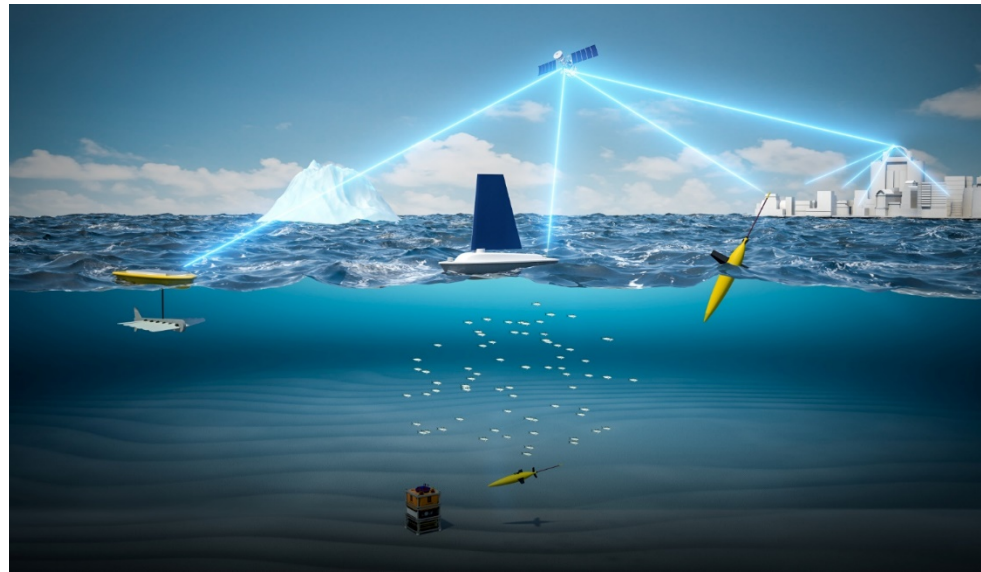


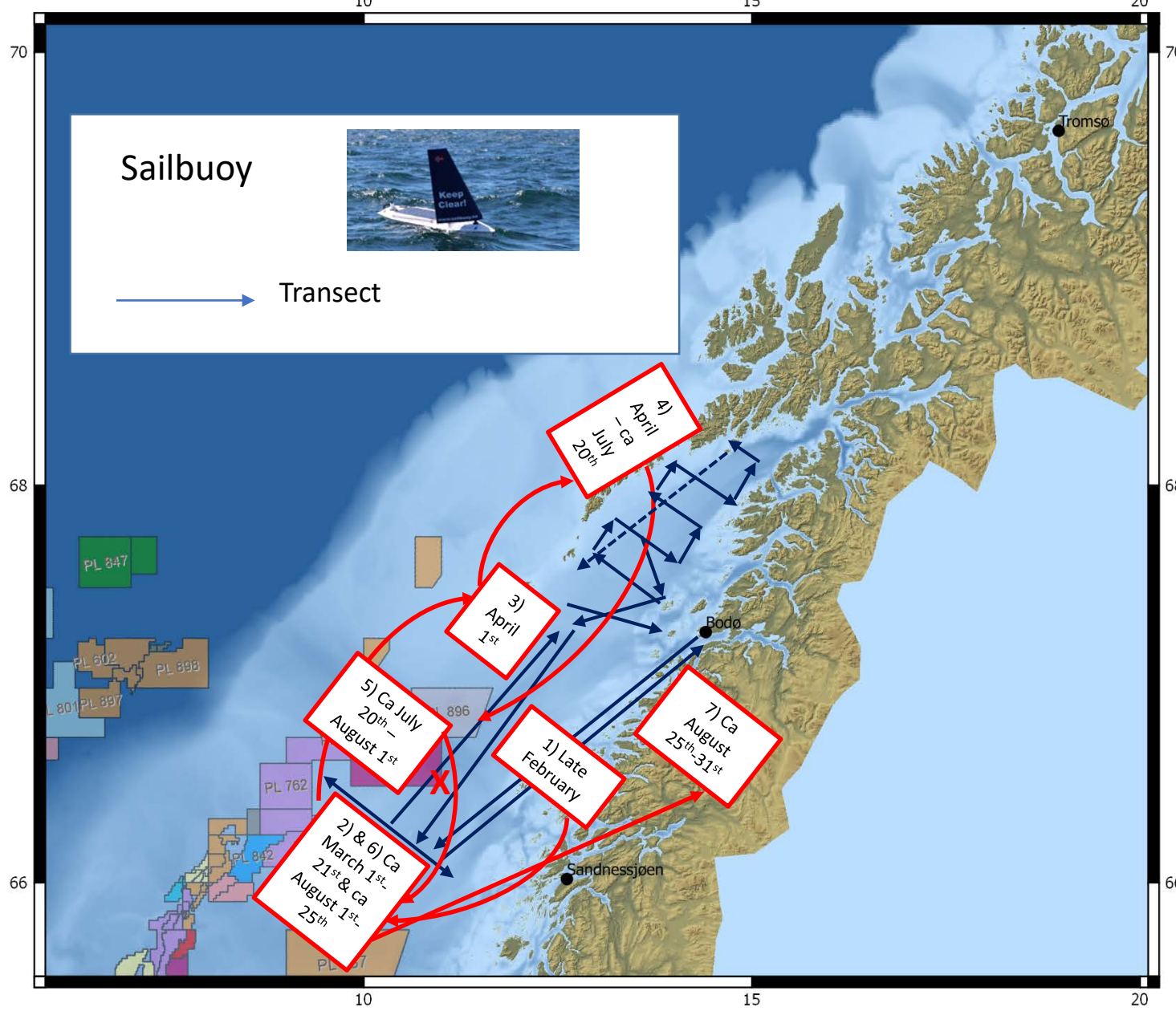
# Plan for GLIDER survey in 2018

Ca. March 6<sup>th</sup> to September 3<sup>rd</sup>



# Objectives:

- To understand the dynamic and timing of biological events during the spawning time of the Atlantic cod in the Lofoten - Vesterålen area
- To monitor the water masses characteristics of the Norwegian shelf south of Lofoten
- To compare Vestfjorden versus the west coast of Lofoten ecosystems
- To carry out ground-truthing in collaboration with ongoing surveys and studies



**Objective: Survey of Vestfjorden**

Survey of Norwegian Sea shelf south of Lofoten during March to August  
 Transect in Vestfjorden and back (depending on wind forecast)

Blue arrows: proposed approximate track

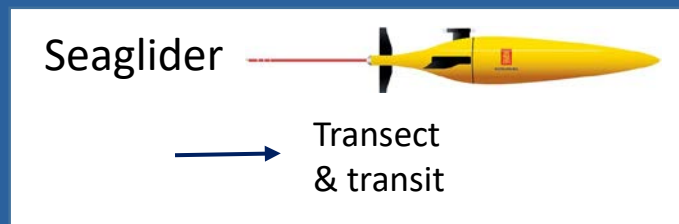
- 1) Transit from Bodø, to arrive at Waypoint 1 around March 1st.
- 2) Survey perpendicular to the coastline (March 1st-21th). Then transit towards outer part of Vestfjord
- 3) Arrival at outer part of Vestfjord at April 1st
- 4) Surveying back and fourth in Vestfjord (along/perpendicular to coastlines). Minimum depth 30m. April – ca 15th of July
- 5) Transit from Vestfjord towards Waypoint 1.
- 6) Arrival at Waypoint 1 ca August 1<sup>st</sup>. Survey perpendicular to the coastline (ca August 1<sup>st</sup>- 25<sup>th</sup>)
- 7) Transit from Waypoint 1 to Bodø (ca August 25<sup>th</sup>-31<sup>th</sup>)

**X: Waypoint 1: 66° 30' N, 11° 00' E**

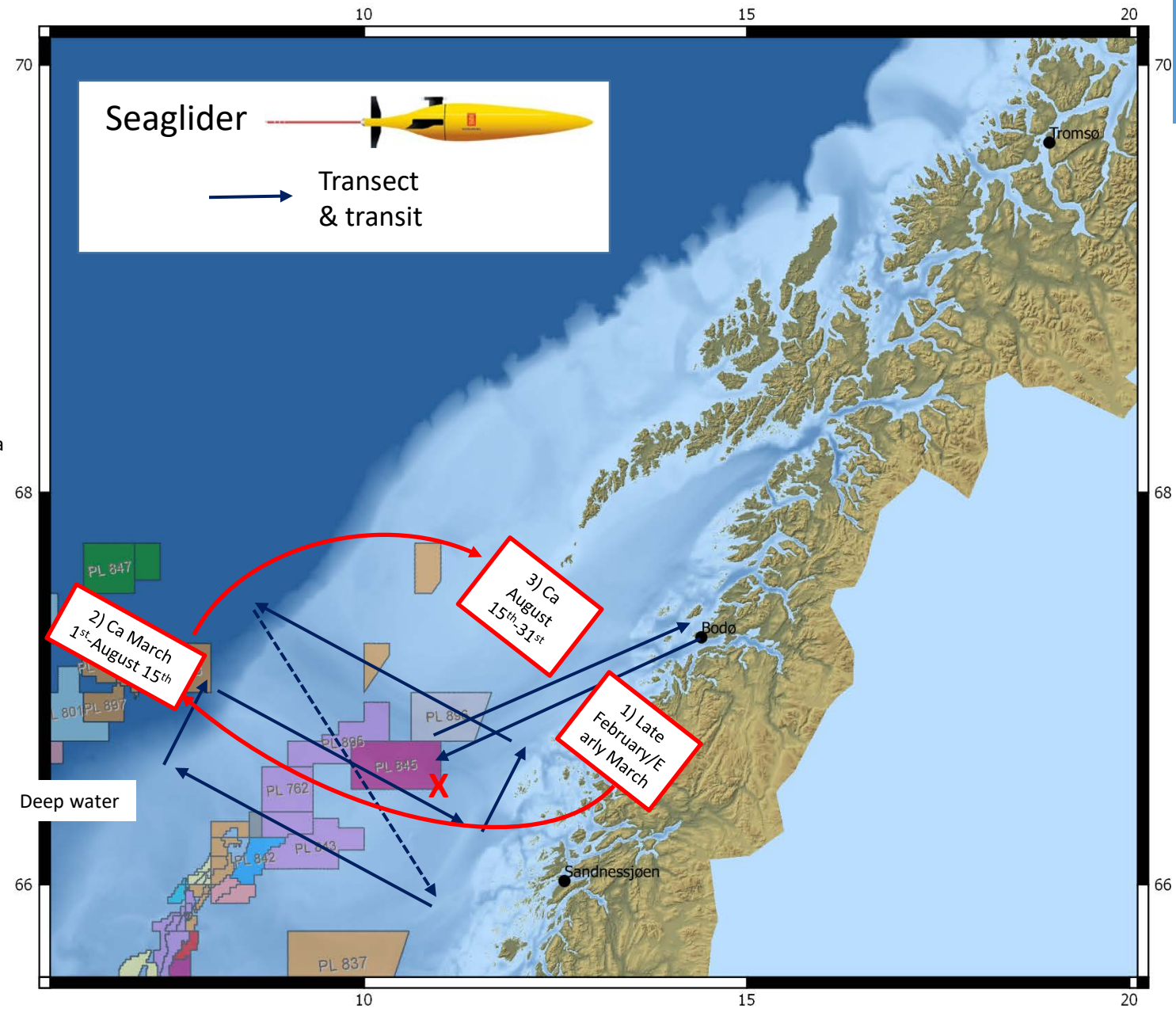
Survey across the continental shelf, slope and deep water  
From March to August

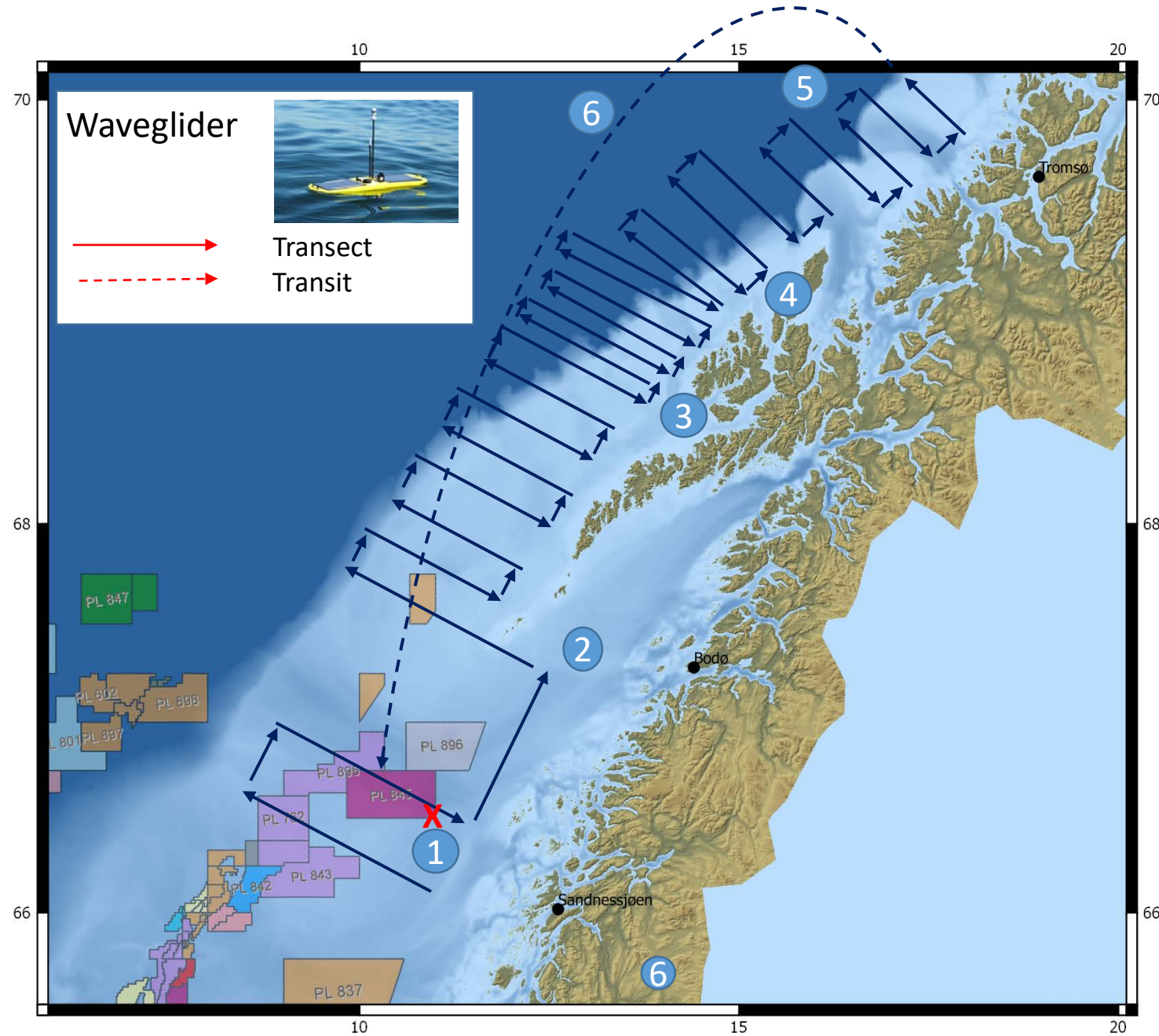
Blue arrows: proposed approximate track

- 1) Transit (by vessel) from Bodø to Waypoint 1, in order to arrive around March 1st. (Glider may be deployed closer to the coast, at >200m depth).
- 2) Survey in the waters, perpendicular to the coastline (March 1st- ca August 15<sup>th</sup>). Max diving depth is 1000 m, but the glider should cover the shelf and slope until bottom depth is >1500m. Then transit towards outer part of Vestfjord
- 3) Transit from Waypoint 1 to Bodø (ca August 15<sup>th</sup>-31<sup>th</sup>)



**X: Waypoint 1: 66° 30' N, 11° 00' E**





Survey following the cod larvae drift northward  
 Work in collaboration with UiT cruise (and potentially with IMR)  
 From March to August

- 1 2 first weeks in March
  - 2 2 last weeks in March
  - 3 In collaboration with IMR cruise  
Drift of Atlantic cod larvae (?) (April)
  - 4 In collaboration with IMR/Statoil  
Subsea observatory (?). Beginning of May to mid June
  - 5 In collaboration with UiT Sea Patch cruise:  
plankton. Mid June to end of July.
- Transit back to Waypoint 1 (early August)

**X: Waypoint 1: 66° 30' N, 11° 00' E**