

Why choose the Norwegian flag

Financial benefits



Financial benefits



Competitive grant schemes for seafarers

The Norwegian net-wage scheme reimburses up to 100% of Norwegian tax and supports your company's ability to hire and retain seafarers.

Tax benefits

Competitive tonnage tax system.

Efficiency

Efficient handling and registration of new vessels saving our customers time and money.

The Norwegian NO_x fund

Shipping companies that sign up to this agreement, whether they are Norwegian or not, will be exempt from paying the NO_x tax and can apply for funding of NO_x-reducing measures.

Guarantees that promote Norwegian exports

Tailor-made long-term financing systems for buyers of all types of vessels and guarantees for vessels built in Norway or abroad with significant Norwegian content.

Why choose the Norwegian flag

Operational advantages



Operational advantages



Safety

Diligent follow-up from the best RO's and Classification Societies raises operational standards and support our customers strict focus on safety.

Response

One point of contact offering you speedy and accurate response to all queries.

Partnerships

The NMA works in partnership with shipping companies to ensure that Norwegian flagged ships maintain the highest level of safety and environmental standards. We are your partner for navigating in legislation.

Support

Professional port-state team offering first-class support on a global basis 24/7.

Digitalization

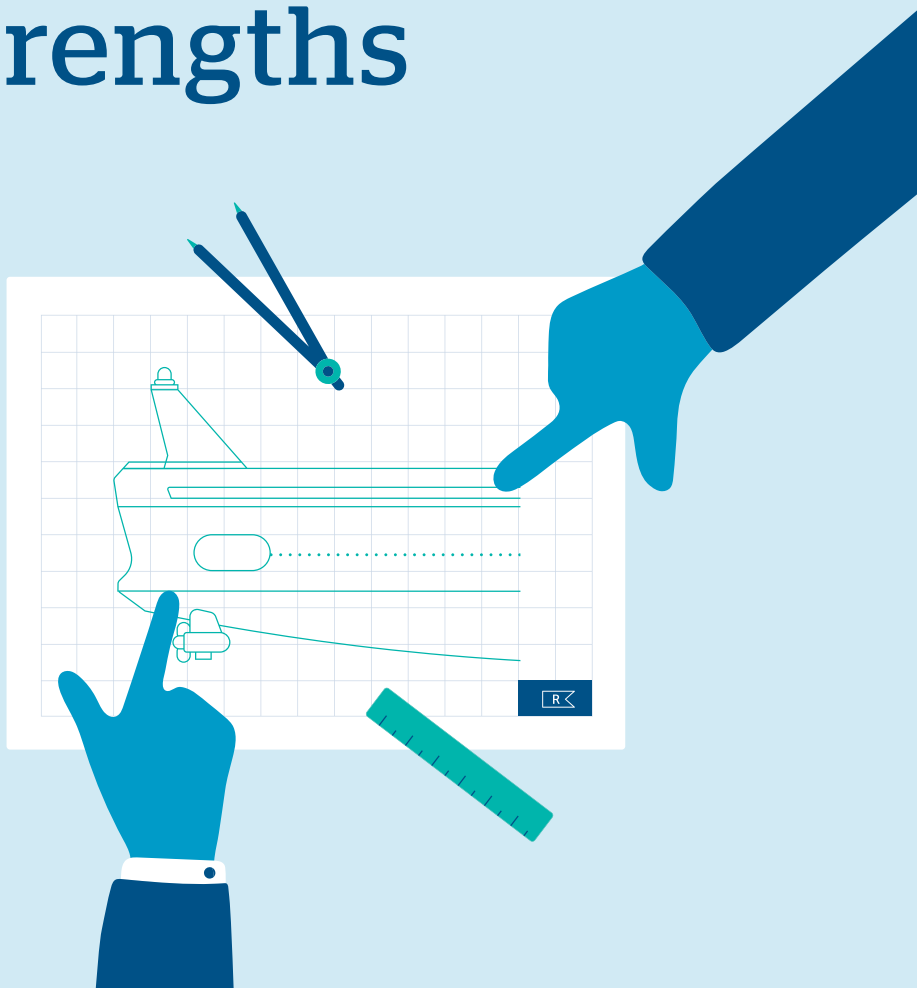
Effective and user-friendly digital solutions which help increase your operational efficiency. Full overview and self-service system offering documents/certifications related to seafarers, vessels and accidents.

Security

Political stability offered by Norwegian maritime policies combined with the 24/7 assistance offered worldwide to Norwegian flagged ships.

Why choose the Norwegian flag

Commercial strengths



Commercial strengths



Expertise

The NMA has extensive knowledge within green shipping technology and is an excellent partner in assessing new solutions and enabling innovation.

Efficiency

Our short response time and support mechanisms help our customers provide efficient and first-class service.

International influence

The NMA participates in international forums dealing with future rules and regulations.

Positioning

Our strong flag state performance reinforces the credibility of our customers.

Reputation

The Norwegian flag has a solid position which many leading shipping companies want to be associated with. The NMA is a trusted partner in quality operations.

Why choose the Norwegian flag

Crewing benefits



Crewing benefits



Competitive grant schemes for seafarers

The Norwegian net-wage scheme reimburses up to 100% of Norwegian tax and supports your company's ability to hire and retain seafarers.

Competence

Securing long term competence on board and ashore.

Health and welfare

The NMA offers extensive welfare services to improve working and living conditions for seafarers. Strict medical checks. Good and reliable pension schemes.

Documentation

Limited number of required endorsements. Self-service and user friendly system for issuing endorsements.

Attracting younger talent

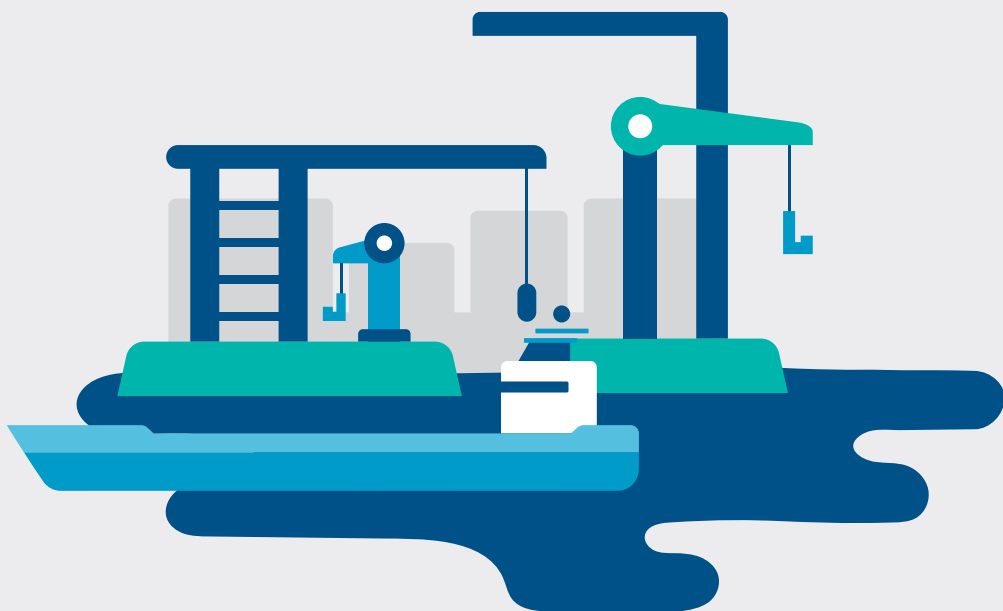
Training positions associated with the Norwegian net-wage scheme attract young talent into the maritime industry.

Loyalty

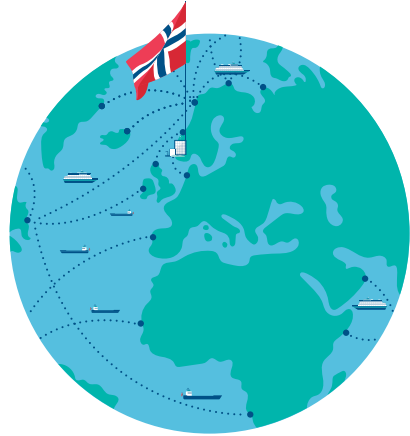
Norwegian roots and the Norwegian leadership model are valued and respected among seafarers all over the world.

Why choose the Norwegian flag

Unique security



Unique security



The Norwegian maritime cluster

Representing competence and experience and providing world-leading networks for sharing and building knowledge.

Norwegian maritime policy

A stable and reliable maritime policy.

Security

The Norwegian Navy is present in strategic areas of the world, offering support to Norwegian-flagged ships.

Contingency

Support in contingency situations - accidents, political unrest, casualties, criminal cases.

Consulates

We have consulates in 164 countries that are available to help Norwegian-flagged vessels 24-7.